



PRODUCT OVERVIEW

TABLE OF CONTENTS

AIR RELEASE VALVES	2	PIVOT GATE VALVES	16
DARV - Dual Air Release Valve	2	DPFGV - Dual Pivot Flanged Gate Valve	16
DSARV - Dual slurry Air Release Valve	2	DPHPGV - Dual Pivot High Pressure Gate Valve	16
		DPWGV - Dual Pivot Wafer Gate Valve	17
BALL CHECK VALVES	3	KNIFE GATE VALVES	18
DDNRV - Dual Double Non-Return Valve	3	DFKG - Dual Flanged Knife Gate Valve	18
DDWV - Dual Dewatering In Line Ball Check Valve	3	DLKG - Dual Lined Knife Gate Valve	18
DDV - Dual Dashley Double Ball Check Valve	4	DULKG - Dual Urethane Lined Knife Gate Valve	19
DDFSCV - Dual Flapper Flex Swing Check Valve	4	DSSLKG - Dual Severe Service Lined Knife Gate Valve	19
DFFV - Dual Free Flow Slurry Ball Check Valve	4	DHPSKG - Dual High Pressure Slurry Knife Gate Valve	20
DFSV - Dual Flo-Stop Valve	5	DWKG - Dual Wafer Knife Gate Valve	20
DFV - Dual Valve	5	DLMKG - Dual Lined Moulded Knife Gate Valve	21
DINCV - Dual In-Line Check Valve	5		
DSCV - Dual Swing Check Valve	6	PINCH VALVES	22
DSFFV - Dual Slimline Ball Non-Return Valve	6	DPVO - Dual Pinch Valve Open Body Type	22
DSSCV - Dual Slurry Swing Check Valve	6	DPVE - Dual Pinch Valve Enclosed Body Type	22
DPV - Dual Pump Protection Valve	7	DPVFE - Dual Pinch Valve Fully Enclosed	22
		DPPV - Dual Pneumatic Pinch Valve	23
DIAPHRAGM VALVES	8	DPPV-L - Dual Pneumatic Pinch Valve	23
DPDV - Dual Pneumatic Diaphragm Valve	8	DLPOPV - Dual Low Pressure Open Frame Pinch Valve	23
DSTDV - Dual Straight Through Diaphragm Valve	8	DSPV - Dual Single Pinch Valve	24
DWTDV - Dual Weir Type Diaphragm Valve	9	DSTPV - Dual Straight-Through Pinch Valve	24
GATE VALVES	10	ACTUATORS	25
DDGV - Dual Diverter Gate Valve	10	DBG - Dual Bevel Gearbox	25
DFRDSV - Dual Flanged Rotary Disc Sleeve Valve	10	DDAPA - Dual Double Acting Pneumatic Actuator	25
DPSGV - Dual Ported Slide Gate Valve	11	DHCA - Dual Hydraulic Cylinder Actuator	26
DRDV - Dual Rotary Disc Valve	11		
DRSV - Dual Resilient Seal Valve	12	VALVE EXTRAS	26
DWGV - Dual Wedge Gate Valve	13	DARB - Dual Abrasive Resistant Balls	26
DSGV - Dual Slide Gate Valve	13	DPVS - Dual Pinch Valve Sleeves	26
DASGV - Dual Ash Slide Gate Valve	13	DRS - Dual Ring Sleeves	26
DSSWSV - Dual Severe Service Wafer Sleeve Knife Gate Valve	13	DVD - Dual Valve Diaphragms	27
DCLCV - Dual Ceramic Lined Control Gate Valve	14	DDC - Dual Deflection Cone	27
DWSGV - Dual Wafer Sleeve Gate Valve	14		
DFHPSGV - Dual Flanged High Pressure Sleeve Gate Valve	15		
DFSGV - Dual Flanged Sleeve Gate Valve	15		



MISSION

Developing, manufacturing and distributing high quality industrial process valves for on-off and throttling control, emphasizing slurry handling applications. Attaining and sustaining a pre-eminent position in our field through Total Customer Satisfaction by providing Value Added Products, Applications Expertise, On-Time Delivery and Cost Effective Repair parts support.

INTRODUCTION

The Dual Valves team has more than 40 years experience in technical and valve engineering in the slurry industry. We ensure our products are designed to suit customer specifications and requirements. Our team has designed valves from the ground up, based on application, pressure rating, face-to-face and size.

Based in Apex Industrial, Benoni, South Africa, we pride ourselves in being a local manufacturer of our entire range of products.

We manufacture a comprehensive range of gate valves, pinch valves, ball check valves and many more.

With over 47 Products in our range, we have continued to engineer these products to increase longevity and ease of maintenance in situ, however this has not stopped us from finding new and innovative ways to increase the quality of our products.

With a strong team of determined and hard working engineers lead by Stephen Van Rensburg, we have successfully tackled some of the largest valve projects and have shipped our extensive range across the world.

In the 40 years of manufacturing Dual has made significant progress in the manufacturing of valves, as well as finding the better solutions with materials that increase the wear life of our valves. All products are manufactured to ISO 9001:2015 and tested to ISO 5028 standards.

The company was started by Gerry Van Rensburg and Stephen Van Rensburg, his son. Stephen is driven to always find the best solution to a mining or pipeline project.

Dual Products started with the DFV Valve which today still stands as our flagship model, adding to that, Dual has engineered and perfected many more products from Gate valves to Diaphragm Valves.

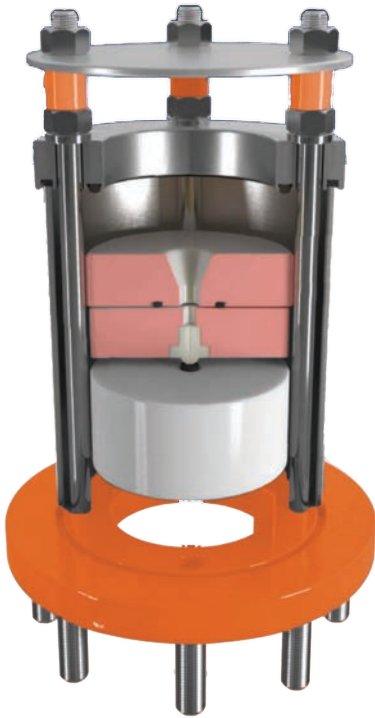
We manufacture in house, which gives us great flexibility to customize our valves to suit client requirements.

VALVE APPLICATIONS:

- | | |
|-------------------------------|-------------------|
| Mining and mineral processing | Slurry Pipelines |
| Power generation | Deep well pumping |
| Sand and gravel | Waterlines |
| Chemical and soda ash | Sewage |
| Pulp and paper | Pump suction |
| Environmental and effluent | Pump discharge |
| | Vacuum systems |

ALL VALVES ARE HYDROSTATICALLY TESTED BEFORE SHIPMENT.

DARV - DUAL AIR RELEASE VALVE



SIZE RANGE:	25mm through to 200mm. Larger sizes on request.
OPERATING TEMPERATURES:	Operating temperatures to 80°C. Higher conditions are possible if the valve is constructed from suitable materials.
VALVE BODY:	Stainless Steel (304 or 316).
PRESSURE RATING:	Working Pressure Standards are PN 10, PN 16, PN 25 and PN 40.
BARREL:	304 Stainless Steel.
FLANGES:	Mild Steel, FBE Coated or Threaded (BSP).
FLOATS:	Guided HDPE.
SCREEN AND COVER PLATE:	304 Stainless Steel.
SEALS AND O RINGS:	EPDM.
DRILLING PATTERNS:	ANSI B16.5, DIN, Screwed, SABS & BS Optional.
MATERIAL CERTIFICATION:	Certified chemical and physical test reports can be supplied.

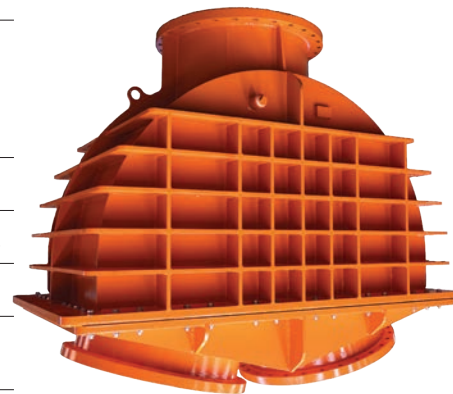
DSARV - DUAL SLURRY AIR RELEASE VALVE



SIZE RANGE:	50mm to 200mm. Larger sizes on request.
OPERATING TEMPERATURES:	Operating temperatures to 80°C. Higher conditions are possible if the valve is constructed from suitable materials.
VALVE HOUSING:	Valve housing is Cast SG Iron, fabricated Carbon Steel or Stainless Steel (304 or 316).
PRESSURE RATING:	Working pressure standards are 10 up to 160 Bar for Air Release Valves, and up to 25 Bar for combination valves for use of slurries.
LINING:	Valve housing can be epoxy coated or natural rubber lined. A range of elastomer grades are available for corrosive duties.
BALL:	Guided HDPE floating ball, solid Urethane or hollow Stainless Steel for high pressure.
VALVE SEAT:	Natural Rubber or Stainless Steel (304 or 316).
DRILLING PATTERNS:	ANSI B16.5, DIN, SABS & BS optional.
MATERIAL CERTIFICATION:	Certified chemical and physical test reports can be supplied.

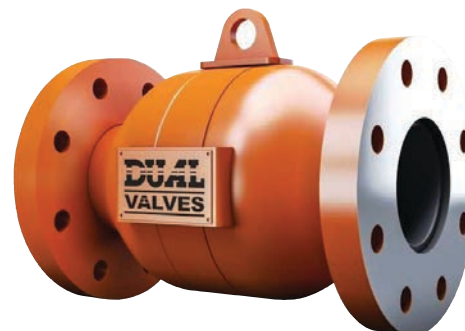
DDNRV - DUAL DOUBLE NON-RETURN VALVE

SIZE RANGE:	Valve body and Face-to-Face dimension can be changed to suit existing applications. 65mm - 900mm.
BODY TYPE:	Fabricated Carbon Steel. The valve body can be lined in Natural Black, Neoprene, Hypalon, EPDM Rubber, Ceramic or Urethane.
PRESSURE RATING:	10, 16, 25, 40 and 60 Bar.
SEATS (REPLACEABLE):	Natural Rubber, Urethane or Stainless Steel.
BALL (REPLACEABLE):	Urethane or Rubber.
FLANGED CONNECTION:	Shouldered end connections for victaulic couplings if required.
VALVE INTERVALS:	Valve flanged to customer specification. Flushing port in ball body.
OTHER:	Different mounting brackets can be fitted to suit application.



DDWV - DUAL DEWATERING IN LINE BALL CHECK VALVE

SIZE RANGE:	80mm - 500mm.
OPERATING TEMPERATURE:	-10°C to +80°C.
VALVE TYPE:	Ball Non-return valve.
PRESSURE RATING:	10 Bar - 60 Bar.
MEDIUM:	Water. Mine water underground. Heavy, thick and viscous liquid.



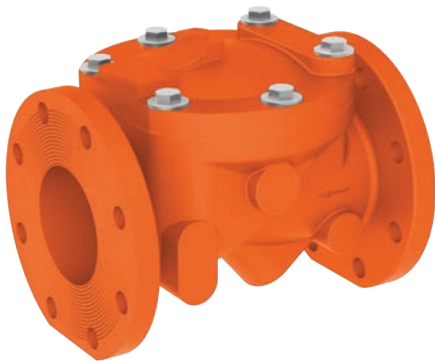
DFV - Dual Valve

DDV - DUAL DASHLEY DOUBLE BALL CHECK VALVE



The body is carbon steel (fabricated).
 The valve body can be lined in Natural Black Rubber, Neoprene, Hypalon, EPDM, Ceramic or Urethane.
 Seats are replaceable and can be made of any material requested by the client.
 Balls are replaceable and are made of urethane or rubber.
 Shouldered end connections for victaulic couplings (if required).
 Valve flanged to customer specification.
 Flushing port in ball bodies.
 Lifting Lugs.
 Balls can be replaced or inspected from top ball cover.
 Different mounting brackets can be fitted to suit application.
Pressure Rating: 10, 16, 25 Bar.

DFFSCV - DUAL FLAPPER FLEX SWING CHECK VALVE



SIZE RANGE:	50mm - 600mm. For Larger sizes contact the factory.
OPERATING TEMPERATURES:	-10°C to +80°C.
BODY TYPE:	Cast SG Iron.
FLAPPER DISC MATERIAL:	Steel construction, coated with Viton, Natural Rubber, Hypalon, EPDM or Urethane.
VALVE BODY LINING:	Natural Black Rubber.

DFFV - DUAL FREE FLOW SLURRY BALL CHECK VALVE



Valve housing is constructed of high quality Carbon Steel. Stainless Steel is an option.
 Valve housing can be Natural Rubber lined. A range of elastomer grades are available for corrosive duties (Urethane or Ceramic).
 Ball is made of hollow Carbon Steel and is Urethane coated. Other elastomers are also available (Stainless Steel for high pressure).
 The seat is made in Abrasive Resistant AR Steel (500 Brinnell hardness), Urethane or Stainless Steel and is replaceable.
 Flanges comply with AS, ANSI, DIN, SABS or BS.
 Working pressure standards are 16, 25, 40, 80 and 100 Bar.
 Operating temperature to 80°C. Higher conditions are possible if the valve is constructed from suitable material.
 The Free Flow Valve can work in the horizontal and vertical position.
 Flushing ports are fitted to the upper ball body.
SIZE RANGE: 80mm to 600mm.

DFSV - DUAL FLO-STOP VALVE



SIZE RANGE:	80mm - 500mm.
OPERATING TEMPERATURE:	-10°C to +80°C.
TYPE:	Ball non-return valve.
PRESSURE RATING:	See table.
MEDIUM:	Water. Mine water underground. Heavy, thick and viscous liquid.

DFV - DUAL VALVE



SIZE RANGE:	80mm - 600mm.
OPERATING TEMPERATURES:	-20°C to 100°C.
BODY TYPE:	Fabricated Carbon Steel or Stainless Steel.
PRESSURE RATING:	0 Bar to 100 Bar. (For higher pressures, please consult our factory).
BALL LINING:	Natural Rubber, EPDM, Butyl, Urethane.
BALL:	Carbon Steel, Urethane Coated or Stainless Steel.
FLOW RATE:	See pressure drop chart.
VALVE TYPE:	Flanged.
FLANGE DRILLING:	AS, ANSI, DIN, SABS or BS.
FLUSHING PORT:	All valves have a minimum of one purge: one in the lower body and one in the bonnet area.
PVC BELLOWS:	Optional.
MATERIAL CERTIFICATION:	Certified Chemical and Physical test reports can be supplied.

DINGV - DUAL IN-LINE CHECK VALVE



SIZE RANGE:	50mm - 600mm (For larger sizes consult factory).
OPERATING TEMPERATURES:	-20°C to 100°C.
BODY TYPE:	Gum Rubber.
PRESSURE RATINGS:	0 to 40 Bar, for higher pressures, please consult our factory.
CHECK VALVE:	Natural Rubber, EPDM, Butyl, Viton or Neoprene.
DISC MATERIAL:	Stainless Steel, SG42 Cast Iron, Rubber and Urethane lined.
VALVE TYPE:	Enclosed or Slip In-Line.
FLANGE DRILLING:	BS4505, BS, ANSI or DIN.
MATERIAL CERTIFICATION:	Certified chemical and physical test reports can be supplied.

DSCV - DUAL SWING CHECK VALVE



SIZE RANGE:	50mm - 600mm (For larger sizes consult factory).
OPERATING TEMPERATURES:	-10°C to +80°C.
PRESSURE RATINGS:	See table below (For higher pressure consult factory).
DISC MATERIAL:	Stainless Steel, SG42 Cast Iron, Rubber and Urethane lined.

DSFFV - DUAL SLIMLINE BALL NON-RETURN VALVE



SIZE RANGE:	50mm - 600mm Larger sizes on request.
OPERATING TEMPERATURES:	-10°C to +80°C.
BODY TYPES:	Ball foot valve. Ball non-return valve.
PRESSURE RATINGS:	See table below.
BALL MATERIAL:	Steel core, Urethane or Rubber coated.

DSSCV - DUAL SLURRY SWING CHECK VALVE



SIZE RANGE:	50mm - 600mm.
OPERATING TEMPERATURES:	-50°C to 180°C.
BODY TYPE:	Fabricated Carbon Steel.
PRESSURE RATINGS:	16, 25, 40, 60 and 100 Bar.
REPLACEABLE SEAT SLEEVE:	Rubber or Urethane.
DISC MATERIAL:	Stainless Steel, Carbon Steel or Rubber coated.
BODY LINING:	Gum Black, Red Rubber, EPDM, Butyl, Chlorobutyl, Neoprene, Ceramic, Polyurethane, Viton or Hypalon.
DRILLING PATTERNS:	Drilled to SABS, ANSI BS or DIN.

DPV - DUAL PUMP PROTECTION VALVE



SIZE RANGE:	40mm, 50mm, 80mm & 100mm.
OPERATING TEMPERATURES:	80°C Higher on request.
BODY TYPE:	Carbon Steel Stainless Steel body type.
PRESSURE RATINGS:	0 - 100 Bar.
BALL:	Urethane or Stainless Steel.
FLANGE CONNECTION:	To suit pump and pump line / Victaulic.
VALVE INTERVALS:	304 Stainless Steel body seat, Carbon Steel or Stainless Steel ball controller, tensioner and flushing port, helical spring coated spring.



DSFFV - Slimline Ball Non-Return

DPDV - DUAL PNEUMATIC DIAPHRAGM VALVE



SO-Type

SIZE RANGE:	25mm - 350mm.
OPERATING TEMPERATURES:	-50°C to 140°C.
BODY TYPE:	Cast Aluminium, Cast SG42, Cast Iron or Stainless Steel.
VALVE TYPE:	Straight Through Weir.
PRESSURE RATINGS:	10 Bar (For higher pressures, please consult our factory).
DIAPHRAGM:	Gum Black or Red Rubber, EPDM, Butyl, Chlorobutyl, Neoprene, Polyurethane, Viton and Hypalon.
VALVE INTERNALS:	Rubber Diaphragm.
MATERIAL CERTIFICATION:	Certified chemical and physical reports can be supplied.

DSTDV - DUAL STRAIGHT THROUGH DIAPHRAGM VALVE

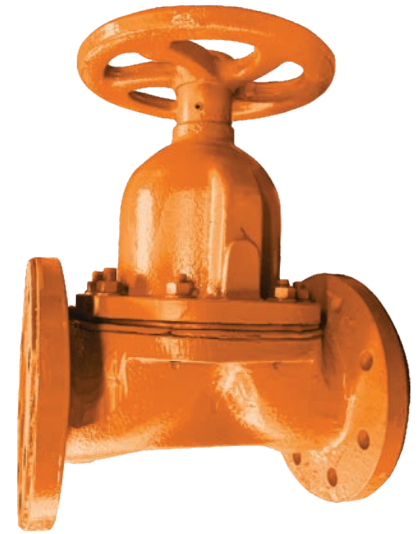


SO-Type

SIZE RANGE:	50mm - 400mm.
OPERATING TEMPERATURES:	-50°C to +140°C.
BODY TYPE:	Cast Aluminium, Cast SG Iron.
VALVE TYPE:	Rising and non rising spindle.
PRESSURE RATINGS:	16 Bar (For higher pressure consult factory).
DIAPHRAGM:	Gum Rubber, Red Rubber, EPDM, Butyl, Chlorobutyl, Neoprene, Polyurethane, Viton and Hypalon.
THRUST BEARINGS:	To reduce operating torque (handwheel type).
THREADED BODY:	25mm to 80mm.
FLANGED BODY:	Drilled to SABS, ANSI, BS or DIN.
VALVE INTERVALS:	304 Stainless Steel spindles, Rubber diaphragm.
BODY LININGS:	Variety of linings available
MATERIAL CERTIFICATION:	Certified chemical and physical test reports can be supplied.

DWTDV - DUAL WEIR TYPE DIAPHRAGM VALVE

SIZE RANGE:	25mm - 350mm.
OPERATING TEMPERATURES:	-50°C to +140°C.
BODY TYPE:	Cast Aluminium, Cast SG42, Cast Iron.
PRESSURE RATINGS:	16 Bar (For higher pressure consult factory).
DIAPHRAGM:	Gum Rubber, Red Rubber, EPDM, Butyl, Chlorobutyl, Neoprene, Polyurethane, Viton and Hypalon.
THRUST BEARINGS:	To reduce operating torque (handwheel type).
FLANGED BODY:	Drilled to SABS, ANSI, BS or DIN.
VALVE INTERVALS:	Spindle, Spindle nut, Compressor, Diaphragm.
BODY LININGS:	EPDM, Butyl, Neoprene, ECTFE, Halar or Polyurethane.
MATERIAL CERTIFICATION:	Certified chemical and physical test reports can be supplied.



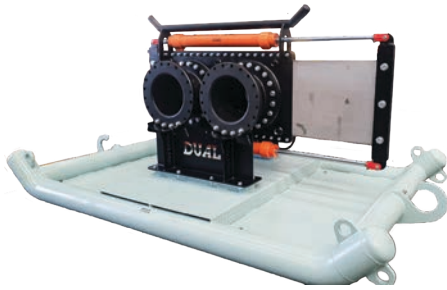
WO-Type

150mm SO type Diaphragm valve



DPVO - Pinch Valve Open Body Type

DDGV - DUAL DIVERTER GATE VALVE



Push through type.
Discharges to atmosphere.

OPERATING TEMPERATURES:	90°C Maximum.
BODY TYPE:	Flanged or Wafer Pattern Steel, Epoxy coated.
PRESSURE RATING:	DN80 to DN600 rated to 240Psi (16 Bar) using 316SS gate.
ELASTOMER SLEEVES:	Urethane.
RETAINER FLANGES:	Rubber covered Carbon Steel flanges (80mm through to 600mm).
GATE MATERIAL:	316 Stainless Steel standard - 316L, 317L, 17-4PH, Alloy 20, SAF 2205 S/S with optional wear coatings.
DRILLING PATTERNS:	DN80 to DN250 drilled and tapped ASME B16.5, BS, DIN, SABS. DN300 to DN1500 flanges are slotted.
MATERIAL CERTIFICATION:	Certified chemical and physical test reports can be supplied.

DFRDSV - DUAL FLANGED ROTARY DISC SLEEVE VALVE



Zero discharge to atmosphere.

SIZE RANGE:	50mm to 2000mm.
BODY TYPE:	Fabricated Carbon Steel, Cast SG Iron, High Chrome or Stainless Steel.
PRESSURE RATINGS:	10 Bar to 100 Bar (150 Psi to 1500 Psi).
GATE MATERIAL:	Gate Material can be Carbon Steel, Abrasion Resistant Steel, Cast High Chrome or Stainless Steel.
THICKNESS:	Gate to have a minimum safety factor of 2:1 based on yield strength of material.
SHAPE:	Gate radius to be set for minimum valve height in chest area. Gate is Metal, Rubber or Urethane coated.
REPLACEABLE RING SLEEVE:	Rubber or Urethane.
THRUST BEARINGS:	To reduce operating torque (handwheel type).
TESTING:	All valves are tested per SABS specifications certified.
FLANGES:	Flanges comply with AS, ANSI, DIN, BS and SABS.
FACE-TO-FACE:	To suit customer specifications.
BODY LINING:	Rubber, Urethane or Ceramic.
MATERIAL CERTIFICATION:	All vetted parts have certified chemical and physical test reports.

DPSGV - DUAL PORTED SLIDE GATE VALVE

SIZE RANGE:	50mm to 1500mm.
BODY TYPE:	Wafer pattern Cast SG Iron, Fabricated Steel, Epoxy Coated.
PRESSURE RATING:	DN50 to DN600 rated to 360Psi (25 Bar). DN650 to DN1500 rated to 150Psi (10 Bar).
BLADE:	316 or 304 Stainless Steel.
ELASTOMER SLEEVES:	Gum Rubber (standard), Nitrile, Viton, Chlorobutyl.
GATE MATERIAL:	316 Stainless Steel standard - 316L, 317L, 17-4PH, Alloy 20, SAF 2205 S/S with optional wear coatings.
DRILLING PATTERNS:	DN50 to DN1500 drilled and tapped ASME B16.5, DIN, SABS & BS Optional.
MATERIAL CERTIFICATION:	Certified chemical and physical test reports can be supplied.



Push through type.
Discharges to atmosphere.

DRDV - DUAL ROTARY DISC VALVE

SIZE RANGE:	50mm to 600mm.
BODY TYPE:	Fabricated Carbon Steel for valves larger than 300mm, Cast SG Iron, High Chrome or Stainless Steel.
PRESSURE RATINGS:	25 Bar - 240Psi.
GATE MATERIAL:	Gate Material can be Carbon Steel, Abrasion Resistant AR Steel, Cast High Chrome or Stainless Steel.
THICKNESS:	Gate to have a minimum safety factor of 2:1 based on yield strength of material.
SHAPE:	Gate radius to be set for minimum valve height in chest area. Gate is round with Metal, Rubber or Urethane seal.
THRUST BEARINGS:	To reduce operating torque.
TESTING:	All valves are tested per SABS specifications certified.
FLANGES:	Flanges comply with AS, ANSI, DIN, BS and SABS.
FACE-TO-FACE:	To suit customer specifications.
LIFTING LUGS:	Valves have lifting lugs / holes sized and located for safe hoisting of valve assembly.
BODY LINING:	Natural Rubber or Urethane.
MATERIAL CERTIFICATION:	All vetted parts have certified chemical and physical test reports.



Zero discharge to atmosphere.

DSGV - DUAL SLIDE GATE VALVE**DASGV - DUAL ASH SLIDE GATE VALVE**

SQUARE

ROUND

Zero discharge to atmosphere.

SIZE RANGE:	200mm.
OPERATING TEMPERATURES:	200°C.
BODY / FRAME:	Cast SG Iron or High Chrome Iron.
WIPER:	PTFE.
SEATS:	Metal to metal.
SPINDLE:	304 Stainless Steel.
GATE GUIDES:	PTFE.
PACKING:	PTFE.
GATE MATERIAL:	316L, 317L, 17-4PH, Alloy 20, SAF 2205 with optional wear coatings.
FLANGED COVER:	Pattern available (square or round) Clear Polycarbonate.

DRSV - DUAL RESILIENT SEAL VALVEZero discharge to atmosphere.
Full port design.

SIZE RANGE:	DN80 to DN600.
OPERATING TEMPERATURES:	-20±°C to 100±°C
BODY:	Cast SG Iron Rubber Coated.
BODY TYPE:	Flanged, socketed and plain end.
BODY LINING:	Natural Rubber.
PRESSURE RATING:	PN 6 to PN 25. For higher pressure, contact Dual.
GATE MATERIAL:	Ductile Iron fully gate encapsulated with 70 shore rubber or urethane.
THRUST BEARINGS:	To reduce operating torque.
TESTING:	All valves are tested per SABS specifications certified.
FLANGES:	Flanges comply with AS, ANSI, DIN, BS and SABS.
FACE-TO-FACE:	To SANS 664 & 665.
MATERIAL CERTIFICATION:	All vetted parts have certified chemical and physical test reports.

DWGV - DUAL WEDGE GATE VALVE

SIZE RANGE:	50mm to 600mm.
BODY TYPE:	Cast SG Iron or High Chrome.
PRESSURE RATINGS:	PN16, PN25, PN40 and PN60.
MANUFACTURING STANDARDS:	SABS 664, SABS 665.
SPINDLE:	304 Stainless Steel.
THRUST BEARINGS:	To reduce operating torque.
TESTING:	All valves are tested per SABS specifications certified.
FLANGES:	Flanges comply with AS, ANSI, DIN, BS and SABS.
LIFTING LUGS:	Valves have lifting lugs/holes sized and located for safe hoisting of valve assembly.
BODY LINING (OPTIONAL):	Rubber, Urethane or Ceramic.
MATERIAL CERTIFICATION:	All vetted parts have certified chemical and physical test reports.



Zero discharge to atmosphere.

DSSWSV - DUAL SEVERE SERVICE WAFER SLEEVE KNIFE GATE

SIZE RANGE:	2" - 30" (50mm - 750mm).
OPERATING TEMPERATURE:	-50°C - +80°C.
VALVE TYPE:	High-Pressure Slurry Knife Gate.
PRESSURE RATING:	Up to 365Psi (25 Bar) Higher Pressure Available (740Psi / 54 Bar).
BODY STYLE:	Narrow Body (Wafer) MSS SP81 Face-to-Face.
BODY:	Fabricated Carbon Steel or Cast SG Iron, 2 Coat Epoxy Painted.
SEAT: (REPLACEABLE)	Metal Covered Rubber or Urethane sleeve with Replaceable Urethane or High Chrome wear ring.
GATE / BLADE:	17-4PH Stainless Steel, 316L Stainless Steel, 2205 Duplex Stainless Steel, 2507 Duplex Stainless Steel, C276 Hastelloy.
DUTY:	Abrasive Applications.
HYDRO-STATIC TEST:	1.5 Times the Rated Pressure.
COMPLIANCE TO:	MSS SP 81 MSS SP 135 ASME B31.3
TEST AND MATERIAL CERTIFICATES:	Standard Quality Documents on Request.

Bonneted Type



Zero discharge to atmosphere.
Full round port design.

DCLCV - DUAL CERAMIC LINED CONTROL GATE VALVE



High wear applications.

BODY:	Fabricated Carbon Steel.
GATE:	Silicon Carbide Ceramic.
THICKNESS:	Gate to have a minimum safety factor 2:1 based on yield strength of material.
BODY LINING:	Silicon Carbide Ceramic.
PRESSURE RATING:	10 Bar / 150PSI.
TESTING:	All valves are tested per SABS specifications certified.
FLANGED:	Flanged comply with AS, ANSI, DIN, BS and SABS.
FACE-TO-FACE:	To suit customer specifications.
MATERIAL CERTIFICATE:	All wetted parts have certified chemical and physical test reports.
APPLICATION:	Milling Circuit Flow

DWSGV - DUAL WAFER SLEEVE GATE VALVE



Zero discharge to atmosphere.
Full port design.

SIZE RANGE:	50mm to 1500mm.
BODY TYPE:	Wafer pattern Cast SG Iron, Stainless Steel or Fabricated Steel with Epoxy coating.
PRESSURE RATING:	DN50 to DN600 rated to 300Psi (21 Bar). DN650 to DN1500 rated 150Psi (10 Bar).
ELASTOMER RING SLEEVE:	Gum Rubber (standard), Nitrile, Viton, EPDM, Chlorobutyl or Urethane.
GATE MATERIAL:	316 Stainless Steel standard - 316L, 317L, 17-4PH, Alloy 20, SAF 2205 S/S.
GATE SURFACE COATING:	SSEC Coating Available.
DRILLING PATTERNS:	DN50 to DN1500 drilled and tapped ASME B16.5, DIN, SABS & BS Optional.
BODY LINING:	Rubber, Urethane or Ceramic.
REPLACEABLE WEAR RINGS:	Rubber, Urethane, High Chrome or Ceramic.
MATERIAL CERTIFICATION:	Certified chemical and physical test reports can be supplied.
DUTY:	Abrasive Applications

DFHPSGV - DUAL FLANGED HIGH PRESSURE SLEEVE GATE VALVE

SIZE RANGE:	50mm to 900mm.
BODY TYPE:	Flanged pattern Cast SG Iron, Stainless Steel or Fabricated Steel with Epoxy coating.
PRESSURE RATING:	DN50 to DN900 rated to 740Psi (51 Bar).
ELASTOMER RING SLEEVE:	Gum Rubber (standard), Nitrile, Viton, EPDM, Chlorobutyl or Urethane.
GATE MATERIAL:	316 Stainless Steel standard - 316L, 317L, 17-4PH, Alloy 20, SAF 2205 S/S.
GATE SURFACE COATING:	SSEC Coating Available.
DRILLING PATTERNS:	DN50 to DN900 drilled and tapped ASME B16.5, DIN, SABS & BS Optional.
BODY LINING:	Rubber, Urethane or Ceramic.
REPLACEABLE WEAR RINGS:	Rubber, Urethane, High Chrome or Ceramic.
MATERIAL CERTIFICATION:	Certified chemical and physical test reports can be supplied.
DUTY:	Abrasive Applications



Zero discharge to atmosphere.
Full port design.

DFSGV - DUAL FLANGED SLEEVE GATE VALVE

SIZE RANGE:	50mm to 900mm.
BODY TYPE:	Flanged pattern Cast SG Iron, Stainless Steel or Fabricated Carbon Steel with Epoxy coating.
PRESSURE RATING:	DN50 to DN900 rated to 300Psi (25 Bar).
ELASTOMER RING SLEEVE:	Gum Rubber (standard), Nitrile, Viton, EPDM, Chlorobutyl or Urethane.
GATE MATERIAL:	316 Stainless Steel standard - 316L, 317L, 17-4PH, Alloy 20, SAF 2205 S/S.
GATE SURFACE COATING:	SSEC Coating Available.
DRILLING PATTERNS:	DN50 to DN900 drilled and tapped ASME B16.5, DIN, SABS & BS Optional.
BODY LINING:	Rubber, Urethane or Ceramic.
REPLACEABLE WEAR RINGS:	Rubber, Urethane, High Chrome or Ceramic.
MATERIAL CERTIFICATION:	Certified chemical and physical test reports can be supplied.
DUTY:	Abrasive Applications



Zero discharge to atmosphere.
Full port design.

DPFGV - DUAL PIVOT FLANGED GATE VALVE



Push through type.
Discharges to atmosphere.

SIZE RANGE:	80mm to 1500mm.
BODY TYPE:	Fabricated Carbon Steel.
PRESSURE RATINGS:	DN80 to DN600 rated to 360Psi / (25 Bar) using 316SS Blade, DN650 to DN1500 - 150Psi (10 Bar).
ELASTOMER SLEEVES:	Gum Rubber (standard), Nitrile, EPDM, Neoprene or Butyl.
RETAINER FLANGES:	Rubber covered Carbon Steel flanges (80mm through to 1500mm).
GATE MATERIAL:	316 Stainless Steel standard - 316L, 317L, 17-4PH, Alloy 20, SAF 2205 S/S with optional wear coatings.
DRILLING PATTERNS:	DN80 to DN250 drilled and tapped ASME B16.5, BS, DIN, SABS. DN300 to DN1500 flanges are slotted.
MATERIAL CERTIFICATION:	Certified chemical and physical test reports can be supplied.

DPHPGV - DUAL PIVOT HIGH PRESSURE GATE VALVE



Push through type.
Discharges to atmosphere.

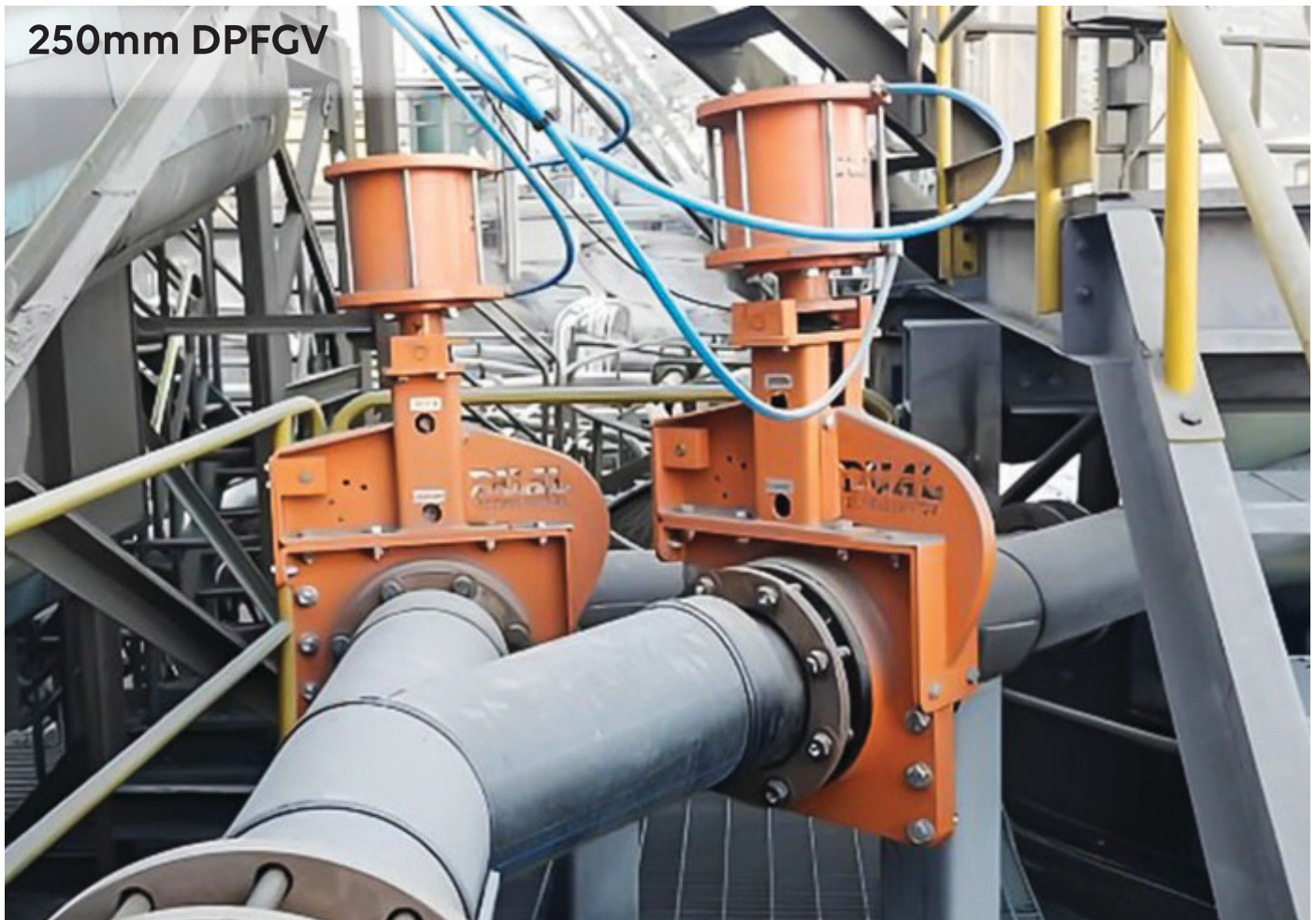
SIZE RANGE:	80mm to 900mm. (Larger sizes available on request).
BODY TYPE:	Fabricated Carbon Steel.
PRESSURE RATINGS:	DN80 to DN900 rated to 740Psi / 51 Bar using 316SS Gate.
ELASTOMER SLEEVES:	Gum Rubber (standard), Nitrile, EPDM, Neoprene or Butyl.
RETAINER FLANGES:	Rubber covered Carbon Steel flanges (80mm through to 900mm).
GATE MATERIAL:	316 Stainless Steel standard - 316L, 317L, 17-4PH, Alloy 20, SAF 2205 S/S with optional wear coatings.
DRILLING PATTERNS:	DN80 to DN250 drilled and tapped ASME B16.5, BS, DIN, SABS. DN300 to DN900 flanges are slotted.
MATERIAL CERTIFICATION:	Certified chemical and physical test reports can be supplied.

DPWGV - DUAL PIVOT WAFER GATE VALVE

SIZE RANGE:	50mm to 600mm.
BODY TYPE:	Fabricated Carbon Steel.
PRESSURE RATINGS:	DN50 to DN600 rated to 240Psi (16 Bar).
ELASTOMER SLEEVES:	Gum Rubber (standard), Nitrile, EPDM, Neoprene or Butyl.
GATE MATERIAL:	316 Stainless Steel standard - 316L, 317L, 17-4PH, Alloy 20, SAF 2205 S/S with optional wear coatings.
DRILLING PATTERNS:	DN50 to DN600 drilled and tapped ASME B16.5, DIN, SABS & BS Optional.
MATERIAL CERTIFICATION:	Certified chemical and physical test reports can be supplied.



Push through type.
Discharges to atmosphere.



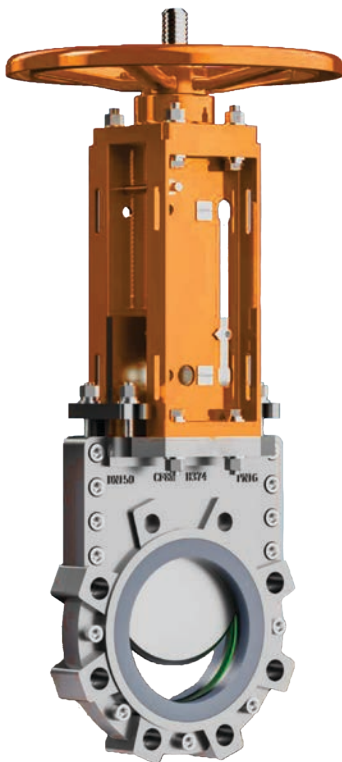
DFKG - DUAL FLANGED KNIFE GATE VALVE



Push through type.
Discharges to atmosphere.

SIZE RANGE:	2" - 60" (50mm - 1500mm).
OPERATING TEMPERATURE:	176°F (80°C).
VALVE TYPE:	Slurry Knife Gate.
PRESSURE RATING:	Up to 300 Psi (21 Bar).
BODY STYLE:	Flanged.
BODY:	Cast Ductile Iron, 2 Coat Epoxy Painted.
GATE:	17-4PH Stainless Steel, 316L Stainless Steel, 2205 Duplex Stainless Steel, 2507 Duplex Stainless Steel, C276 Hastelloy.
GATE / BLADE:	Coated with Fluorocarbon Coating.
SLEEVE: (REPLACEABLE)	Gum Rubber, High-temp EPDM, Neoprene, Nitrile, Butyl.
DUTY:	Abrasive Applications.
HYDRO-STATIC TEST:	1.5 Times the Rated Pressure.
TEST AND MATERIAL CERTIFICATES:	Standard Quality Documents on Request.

DLKG - DUAL LINED KNIFE GATE VALVE



Zero discharges to atmosphere.
Full round port design.

SIZE RANGE:	2" - 24" (50mm - 750mm).
OPERATING TEMPERATURE:	80°C.
VALVE TYPE:	Slurry Knife Gate (MSS-SP-81 Face -to-Face).
PRESSURE RATING:	Up to 240 Psi (16 Bar).
BODY STYLE:	Narrow Body (Wafer).
BODY:	Cast Ductile Iron, two piece coat Epoxy Painted or Stainless Steel.
GATE:	17-4PH Stainless Steel, 316L Stainless Steel, 2205 Duplex Stainless Steel, 2507 Duplex Stainless Steel, C276 Hastelloy.
GATE / BLADE:	Coated with Fluorocarbon Coating.
BODY LINING:	Poly-Urethane, Rubber or Lip Seal.
REPLACEABLE WEAR RINGS:	Rubber, Urethane, High Chrome, Tungsten Carbide, Silicon Carbide or Ceramic
DUTY:	Abrasive Applications.
HYDRO-STATIC TEST:	1.5 Times the Rated Pressure.
TEST AND MATERIAL CERTIFICATES:	Standard Quality Documents on Request.

DULKG - DUAL URETHANE LINED KNIFE GATE VALVE

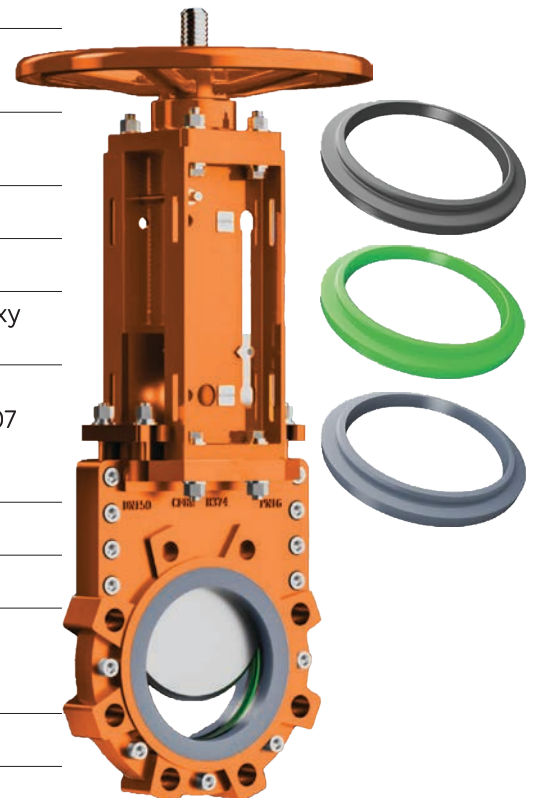
SIZE RANGE:	2" - 30" (50mm - 750mm).
OPERATING TEMPERATURE:	80°C.
VALVE TYPE:	Slurry Knife Gate (MSS-SP-81 Face -to-Face).
PRESSURE RATING:	Up to 240 Psi (16 Bar).
BODY STYLE:	Narrow Body (Wafer).
BODY:	Cast Ductile Iron, two piece coat Epoxy Painted or Stainless Steel.
GATE:	17-4PH Stainless Steel, 316L Stainless Steel, 2205 Duplex Stainless Steel, 2507 Duplex Stainless Steel, C276 Hastelloy.
GATE / BLADE:	Coated with Fluorocarbon Coating.
REPLACEABLE LINER:	Wear resistant polyurethane
WEAR RINGS:	High Chrome or Tungsten Carbide.
DUTY:	Abrasive Applications.
HYDRO-STATIC TEST:	1.5 Times the Rated Pressure.
TEST AND MATERIAL CERTIFICATES:	Standard Quality Documents on Request.



Zero discharges to atmosphere.
Full round port design.

DSSLKG - DUAL SEVERE SERVICE LINED KNIFE GATE VALVE

SIZE RANGE:	2" - 30" (50mm - 750mm).
OPERATING TEMPERATURE:	80°C.
VALVE TYPE:	Slurry Knife Gate (MSS-SP-81 Face -to-Face).
PRESSURE RATING:	Up to 360 Psi (25 Bar).
BODY STYLE:	Narrow Body (Wafer).
BODY:	Cast Ductile Iron, two piece coat Epoxy Painted or Stainless Steel.
GATE:	17-4PH Stainless Steel, 316L Stainless Steel, 2205 Duplex Stainless Steel, 2507 Duplex Stainless Steel, C276 Hastelloy.
GATE / BLADE:	Coated with Fluorocarbon Coating.
BODY SEAL:	Rubber lip seal.
REPLACEABLE WEAR RINGS:	Rubber, Urethane, High Chrome, Tungsten Carbide, Silicon Carbide or Ceramic
DUTY:	Abrasive Applications.
HYDRO-STATIC TEST:	1.5 Times the Rated Pressure.
TEST AND MATERIAL CERTIFICATES:	Standard Quality Documents on Request.



Zero discharges to atmosphere.
Full round port design.

DHPSKG - DUAL HIGH PRESSURE SLURRY KNIFE GATE VALVE



Push through type.
Discharges to atmosphere.

SIZE RANGE:	3" - 36" (80mm - 900mm).
OPERATING TEMPERATURE:	176°F (80°C).
BODY TYPE:	Fabricated Carbon Steel, 2 Coat Epoxy Painted.
PRESSURE RATING:	Up to 740 Psi (51 Bar).
BODY STYLE:	Full Flanged. Slurry Knife Gate (High pressure).
RETAINER FLANGES:	Rubber Covered Carbon Steel Flanges (80mm through to 900mm).
GATE:	17-4PH Stainless Steel, 316L Stainless Steel, 2205 Duplex Stainless Steel, 2507 Duplex Stainless Steel, C276 Hastelloy.
GATE / BLADE:	Coated with Fluorocarbon Coating.
SLEEVE: (REPLACEABLE)	Gum Rubber, High-temp EPDM, Neoprene, Nitrile, Chlorobutyl.
DUTY:	Medium to Heavy Abrasive Applications.
HYDRO-STATIC TEST:	1.5 Times the Rated Pressure.
TEST AND MATERIAL CERTIFICATES:	Standard Quality Documents on Request.

DWKG - DUAL WAFER KNIFE GATE VALVE



Push through type.
Discharges to atmosphere.

SIZE RANGE:	2" - 24" (50mm - 600mm).
OPERATING TEMPERATURE:	176°F (80°C).
VALVE TYPE:	Slurry Knife Gate.
PRESSURE RATING:	Up to 240 Psi (16 Bar).
BODY STYLE:	Narrow Body (Wafer) MSS-SP81 Face-to-Face.
BODY:	Cast Ductile Iron, 2 Coat Epoxy painted or Stainless Steel.
GATE:	17-4PH Stainless Steel, 316L Stainless Steel, 2205 Duplex Stainless Steel, 2507 Duplex Stainless Steel, C276 Hastelloy.
GATE / BLADE:	Coated with Fluorocarbon Coating.
SLEEVE: (REPLACEABLE)	Gum Rubber, High-temp EPDM, Neoprene, Nitrile, Chlorobutyl, Polyurethane.
DUTY:	Abrasive Applications.
HYDRO-STATIC TEST:	1.5 Times the Rated Pressure.
TEST AND MATERIAL CERTIFICATES:	Standard Quality Documents on Request.

DLMKG - DUAL LINED MOULDED KNIFE GATE VALVE

SIZE RANGE:	2" - 30" (50mm - 750mm).
OPERATING TEMPERATURE:	80°C.
VALVE TYPE:	Slurry Knife Gate (MSS-SP-81 Face-to-Face).
PRESSURE RATING:	Up to 240 Psi (16 Bar).
BODY STYLE:	Narrow Body (Wafer).
BODY:	Cast Ductile Iron, two piece coat Epoxy Painted or Stainless Steel.
GATE:	17-4PH Stainless Steel, 316L Stainless Steel, 2205 Duplex Stainless Steel, 2507 Duplex Stainless Steel, C276 Hastelloy.
GATE / BLADE:	Optional Fluorocarbon Coating.
BODY LINING:	Rubber or Urethane
REPLACEABLE DEFLECTOR CONE:	Rubber, Urethane, High Chrome, Tungsten Carbide, Silicon Carbide or Ceramic
DUTY:	Abrasive Applications.
HYDRO-STATIC TEST:	1.5 Times the Rated Pressure.
TEST AND MATERIAL CERTIFICATES:	Standard Quality Documents on Request.



Zero discharges to atmosphere.
Full round port design.



250mm DLKG

DPVO - DUAL PINCH VALVE OPEN BODY TYPE

SIZE RANGE:	50mm - 600mm (For larger consult the factory).
OPERATING TEMPERATURES:	-50°C to 80°C.
BODY TYPE:	Fabricated Carbon Steel.
PRESSURE RATINGS:	25 Bar (For higher pressure consult factory).
ELASTOMER SLEEVE:	Natural Rubber, Butyl or Neoprene.
PINCH BARS:	Carbon Steel Bar Stock.
PINCH BAR GUIDES:	Stainless Steel with protective Covers.
FLANGED:	Drilled to SABS, ANSI B16.5, BS or DIN.
VALVE INTERVALS:	304 Stainless Steel spindles and guides, rubber sleeve, steel Pinch Bars and Nylon Bushing.
MATERIAL CERTIFICATION:	Certified chemical and physical test reports can be supplied.

DPVE - DUAL PINCH VALVE ENCLOSED BODY TYPE

SIZE RANGE:	50mm - 600mm (For larger consult the factory).
OPERATING TEMPERATURES:	-50°C to 80°C.
BODY TYPE:	Fabricated Carbon Steel.
PRESSURE RATING:	40 Bar (For higher pressure consult factory).
ELASTOMER SLEEVE:	Natural Rubber, Butyl or Neoprene.
PINCH BARS:	Carbon Steel Bar Stock.
PINCH BAR GUIDES:	Stainless Steel with protective covers.
FLANGED:	Drilled to SABS, ANSI B16.5, BS or DIN.
VALVE INTERVALS:	304 Stainless Steel spindles and guides, rubber sleeve, steel Pinch Bars and Nylon Bushing.
MATERIAL CERTIFICATION:	Certified chemical and physical test reports can be supplied.

DPVFE - DUAL PINCH VALVE FULLY ENCLOSED BODY TYPE

SIZE RANGE:	50mm - 600mm. (For larger consult the factory).
OPERATING TEMPERATURES:	-50°C to 80°C.
BODY TYPE:	Fabricated Carbon Steel.
PRESSURE RATING:	16 Bar / 240 Psi (For higher pressure consult factory).
ELASTOMER SLEEVE:	Natural Rubber, Butyl or Neoprene.
PINCH BARS:	Carbon Steel Bar Stock.
PINCH BAR GUIDES:	304 Stainless Steel.
FLANGED:	Drilled to SABS, ANSI B16.5, BS or DIN.
VALVE INTERNALS:	304 Stainless Steel spindles and guides, rubber sleeve, steel Pinch Bars and Nylon Bushing.
MATERIAL CERTIFICATION:	Certified chemical and physical test reports can be supplied.

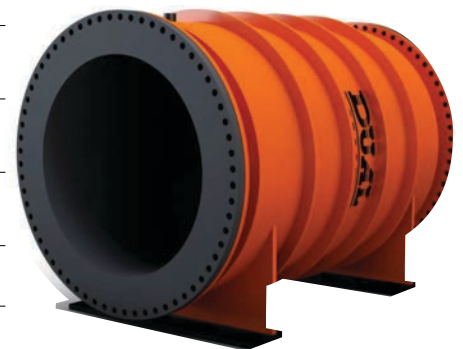
DPPV - DUAL PNEUMATIC PINCH VALVE

SIZE RANGE:	50mm - 350mm.
OPERATING TEMPERATURES:	-50°C to 80°C.
BODY TYPE:	Cast Aluminium, Cast SG Iron, Fabricated Carbon Steel enclosed body type.
PRESSURE RATING:	10 Bar (For higher pressure consult factory).
SLEEVE:	Natural Rubber, Butyl or Neoprene.
FLANGED:	Drilled to SABS, ANSI B16.5, BS or DIN.
MATERIAL CERTIFICATION:	Certified chemical and physical test reports can be supplied.



DPPV-L - DUAL PNEUMATIC PINCH VALVE

SIZE RANGE:	400/16" to 2100/84".
OPERATING TEMPERATURES:	-50°C to 80°C.
BODY TYPE:	Fabricated Carbon Steel or Stainless Steel enclosed body type.
PRESSURE RATINGS:	10 Bar (For higher pressure consult factory).
SLEEVE:	Gum Black Rubber, EPDM, Chlorobutyl, Neoprene, Viton and Hypalon.
FLANGED:	Drilled to SABS, ANSI B16.5, BS or DIN.
MATERIAL CERTIFICATION:	Certified chemical and physical test reports can be supplied.



DLPOPV - DUAL LOW PRESSURE OPEN FRAME PINCH VALVE

SIZE RANGE:	50mm - 600mm (For larger consult factory).
OPERATING TEMPERATURES:	-20°C to +80°C.
BODY TYPE:	Fabricated Carbon Steel.
PRESSURE RATING:	16 Bar (For higher pressure consult factory).
SLEEVE:	Natural Rubber, Butyl or Neoprene.
PINCH BARS:	Carbon Steel Bar Stock.
PINCH BAR GUIDES:	Stainless Steel with protective covers.
FLANGED:	Drilled to SABS, ANSI B16.5, BS or DIN.
VALVE INTERVALS:	304 Stainless Steel spindles and guides, rubber sleeve, steel Pinch Bars and Nylon Bushing.
MATERIAL CERTIFICATION:	Certified chemical and physical test reports can be supplied.



DSPV - DUAL SINGLE PINCH VALVE



SIZE RANGE:	50mm - 350mm.
OPERATING TEMPERATURES:	-50°C to 80°C.
BODY TYPE:	Cast Aluminium, Cast SG Iron, Stainless Steel enclosed body type.
VALVE TYPE:	Rising and non rising spindle.
PRESSURE RATINGS:	16 Bar (For higher pressure consult factory).
ELASTOMER SLEEVE:	Gum Rubber, Red Rubber, Butyl and Neoprene.
THRUST BEARINGS:	To reduce operating torque (handwheel type).
FLANGED:	Drilled to SABS, ANSI B16.5, BS or DIN.
VALVE INTERVALS:	304 Stainless Steel spindles and guides, rubber sleeve, steel Pinch Bars and Nylon Bushing.
MATERIAL CERTIFICATION:	Certified chemical and physical test reports can be supplied.

DSTPV - DUAL STRAIGHT-THROUGH PINCH VALVE



SIZE RANGE:	50mm - 350mm.
OPERATING TEMPERATURE:	-50°C to 80°C.
BODY TYPE:	Cast Aluminium or Cast SG Iron.
VALVE TYPE:	Rising and non rising spindle.
PRESSURE RATINGS:	16 Bar (For higher pressure consult factory).
ELASTOMER SLEEVE:	Natural Rubber, Butyl or Neoprene.
THRUST BEARINGS:	To reduce operating torque (handwheel type).
FLANGED:	Drilled to SABS, ANSI B16.5, BS or DIN.
VALVE INTERVALS:	304 Stainless Steel spindles, Rubber Sleeve and Cast Aluminium Pinch Gate (Plunger).
MATERIAL CERTIFICATION:	Certified chemical and physical test reports can be supplied.

DBG - DUAL GEARBOX

All Gearboxes have lubricated ports.
 Cast SG Iron housing and base plate.
 Maintenance free.
 304 Stainless steel input shaft.
 Sealed to IP67.
 Totally enclosed housing, grease filled.
 Primed finish.
 Optional coatings available
 The Gearbox connecting the flange is in accordance to ENISO521 or DIN3210.
 Cost effective design and is manufactured from high quality materials.
 Zinc plated fasteners.
 Screw protective cap.
 Gearbox can operate in any mounting position.
 The Dual Gearboxes are approved for installation in explosion hazardous areas.



DDAPA - DUAL DOUBLE ACTING PNEUMATIC ACTUATOR

OPERATING TEMPERATURES:	-20°C to 100°C.
TOP & BOTTOM PLATE:	Carbon Steel or Aluminium, Epoxy Coated.
BARREL:	Light weight composite tubing, filament wound Fibreglass.
PISTON:	304 Stainless Steel.
PISTON ROD:	304 Stainless Steel.
TIE ROD & NUTS:	SAE Grade 5 Stainless Steel threaded rods.
PRESSURE RATING:	6 Bar.
LIP SEAL:	Nitrile.
GUIDE RING:	PTFE.
SEAL RINGS:	Neoprene O-Ring seal.
PROTECTIVE COVER:	304 Stainless Steel.
ROD WIPER:	Stainless Steel Housing with Internal Urethane Wiper.
GLAND BUSHING:	Bronze (SAE 660).
BELLOWS:	Vinyl.
PORTS:	At 90° for convenient location.
LIFTING LUGS:	Steel, coated.



DHCA - DUAL HYDRAULIC CYLINDER ACTUATOR



TYPE:	High Pressure Hydraulic Cylinder
BARREL SIZE:	50mm to 350mm
CYLINDER BARREL:	Carbon Steel with Polished ID
PISTON ROD MATERIAL:	CK45 Chromed Plate
PISTON ROD SIZE:	25mm to 125mm
PRESSURE RATING:	180 - 250 Bar
TEMPERATURE:	-30°C to 100°C
GLAND BUSHING:	Cast Iron
BARREL SEAL:	DAS Double Acting Seal
PORTS:	Standard BSP
ROD WIPER:	T38 Polyester, Ice and Mud Scraping Wiper

DARB - DUAL ABRASIVE RESISTANT BALLS



SIZE RANGE:	50mm - 1000mm Larger sizes on request.
OPERATING TEMPERATURES:	-10C to +120C.
BODY TYPES:	High pressure, floating special weight balls.
PRESSURE RATINGS:	0 to 100 Bar.
BALL MATERIALS:	Gum, EPDM, Butyl, Nylon, Neoprene, Stainless Steel, Teflon, HDPE, PTFE or Plastic.
HARDNESS:	75 to 95A.
COLOUR:	Natural and all colours.
BALL INSERT:	Fabricated Steel or Cast Aluminium.

DPVS - DUAL PINCH VALVE SLEEVES



SIZE RANGE:	50mm - 1500mm / 1/2"-60".
OPERATING TEMPERATURES:	-50°C to +120°C.
VALVE TYPE:	Rising and non-rising spindle.
PRESSURE RATINGS:	10 to 150 Bar - 145 to 2175 Psi.
ELASTOMER SLEEVE MATERIAL:	Gum Black and Red Rubber, EPDM, Butyl, Chlorobutyl, Neoprene, Viton, Hypalon or Polyurethane.
FLANGE TYPE:	Full face or D ring.
SLEEVE INTERNALS:	Resistant to wear and chemicals.
MATERIAL CERTIFICATION:	Certified chemical and physical test reports can be supplied.

DRS - DUAL RING SLEEVES

SIZE RANGE:	50mm - 1500mm / 1/2" - 60"
OPERATING TEMPERATURES:	-50°C to +120°C.
PRESSURE RATINGS:	From vacuum to 80 Bar.
ELASTOMER SLEEVE MATERIAL:	Gum Black and Red Rubber, EPDM, Butyl, Chlorobutyl, Neoprene, Viton, Hypalon or Urethane lined.
INTERNAL J-RING:	Carbon or Stainless Steel.
SLEEVE INTERNALS:	Resistant to wear and chemicals.
MATERIAL CERTIFICATION:	Certified chemical and physical test reports can be supplied.



DVD - DUAL VALVE DIAPHRAGMS

Dual manufactures a comprehensive range of flexible diaphragms for type WO and SO valves. All diaphragms are manufactured to the highest International quality standards. Dual Diaphragms are manufactured in South Africa, using our own techniques and expertise.

The diaphragms are moulded with reinforced flexible materials and are manufactured of natural and synthetic rubber compounds in sizes varying from 15mm to 350mm.



DDC - DUAL DEFLECTION CONES

MATERIAL:	Urethane, Ni-hard or Cast High Chrome Steel.
FLANGE THICKNESS:	3mm.

Deflection cones are simple, effective means of protecting valve intervals against wear and scouring in abrasive services. Available in Polyurethane material for general services. 28% Chrome Iron metal option for high abrasion. Field replaceable design. High flow rates achieved by streamlined design. Contoured shape minimizes internal pockets. When using Chrome Iron deflection cones, a gasket is required between the valve and the deflection cone.





DPVO - Pinch Valve Open Body Type



DSARV - Slurry Air Release Valve



DPVFE - Pinch Valve Fully Enclosed



DSTDV - Straight Through Diaphragm



DFEV - Free Flow Slurry Ball Check Valve



DPWGV - Pivot Wafer Gate Valve



DPVO - Pinch Valve Open Body Type



DFRDSV - Flanged Rotary Disc Sleeve Valve



Management
System
ISO 9001:2015

www.tuv.com
ID 9105049898



CORPORATE HEADQUARTERS:
166 ROTTERDAM ROAD
(CNR ROTTERDAM ROAD & ANTWERP STREET)
APEX, BENONI, GAUTENG, SOUTH AFRICA

PO BOX 12520, BENORYN 1504
TEL: +27 11 422 4326/7
FAX: +27 11 421 7842
EMAIL: SALES@DUALVALVES.COM

WWW.DUALVALVES.COM